

Twitter

Overview

Twitter provides a function to connect with Twitter to use the Social Network Service (SNS).

Description

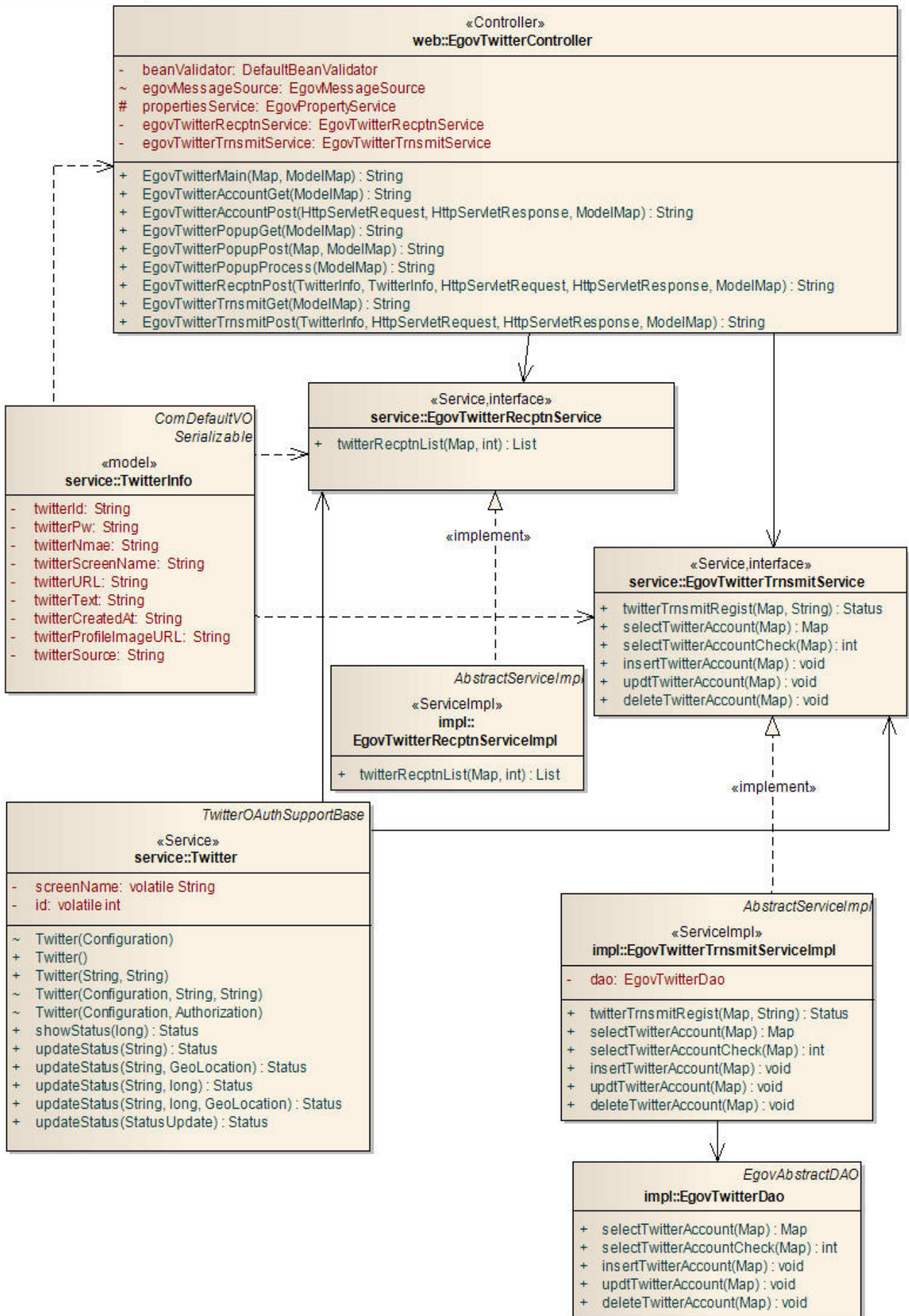
- **Twitter** aims to connect with Twitter and provides registration, registration result inquiry, list inquiry and account management.
 - ① Twitter receiving (list)- authentication: main page to open Twitter authentication screen.
 - ② Twitter receiving (list)- enter authentication key: register Twitter information and inquire registration results.
 - ③ Twitter registration: register twits.
 - ④ Twitter registration results inquiry: retrieve registered twits
 - ⑤ Twitter list: retrieve registered Twitter information.
 - ⑥ Twitter authentication key management: modify registered Twitter authentication key information.

Related sources

Type	Target source names	Notes
Controller	egovframework.com.uss.ion.tir.web.EgovTwitterController.java	controller class for Twitter management
Service	egovframework.com.uss.ion.tir.service.EgovTwitterRecptnService.java	Service Interface for Twitter management
Service	egovframework.com.uss.ion.tir.service.EgovTwitterTrnsmitService.java	Service Interface for Twitter management
ServiceImpl	egovframework.com.uss.ion.tir.service.impl.EgovTwitterRecptnServiceImpl.java	Service implementation class for Twitter management
ServiceImpl	egovframework.com.uss.ion.tir.service.impl.EgovTwitterTrnsmitServiceImpl.java	Service implementation class for Twitter management
DAO	egovframework.com.uss.ion.tir.service.impl.RssTagManageDao.java	Data processing class for Twitter management
Model	egovframework.com.uss.ion.tir.service.TwitterInfo.java	Model class for Twitter management
JSP	/WEB-INF/jsp/egovframework/uss/ion/tir/EgovTwitterMain.jsp	Twitter main jsp page
JSP	/WEB-INF/jsp/egovframework/uss/ion/tir/EgovTwitterPopup.jsp	jsp page for Twitter Consumer key/ Consumer secret authentication
JSP	/WEB-INF/jsp/egovframework/uss/ion/tir/EgovTwitterPopupActor.jsp	jsp page for handling Twitter Consumer

		key/Consumer secret authentication
JSP	/WEB-INF/jsp/egovframework/uss/ion/tir/EgovTwitterPopupProcess.jsp	jsp page for return after Twitter.com authentication
JSP	/WEB-INF/jsp/egovframework/uss/ion/tir/EgovTwitterTrnsmit.jsp	jsp page for Twitter sending (registration)
JSP	/WEB-INF/jsp/egovframework/uss/ion/tir/EgovTwitterTrnsmitResult.jsp	jsp page for Twitter sending and results viewing
JSP	/WEB-INF/jsp/egovframework/uss/ion/tir/EgovTwitterRecptn.jsp	jsp page for Twitter list inquiry
JSP	/WEB-INF/jsp/egovframework/uss/ion/tir/EgovTwitterAccount.jsp	jsp page for Twitter account information modification
XML	/egovframework/sqlmap/com/uss/ion/tir/EgovTwitter_SQL_*.xml	RSS management QUERY XML

Class Diagram



Related Tables

Table name	Table name (English)	Note
Twitter account management	COMTNTWITTER	Define and manage the property information to manage Twitter account.

Related Screen and Execution Manual

Twitter receiving (list)- authentication

A screen is provided to call the Twitter receiving (list)- authentication key input popup window.

트위터 수신(목록)-인증

Twitter receiving (list)- authentication key input

A screen for the authentication of Twitter ConsumerKey and ConsumerSecret keys is provided. Complete the authentication key request. In <http://twitter.com> screen, enter ID and password and request permission.

트위터 수신(목록)-인증키 입력

Consumer key *	<input type="text"/>
Consumer secret *	<input type="text"/>
<input type="checkbox"/> Consumer key/Consumer secret 키 값 저장	
<input type="button" value="전송"/>	

Save: request the authentication of Twitter authentication key (ConsumerKey, ConsumerSecret).

Twitter registration

A screen is provided to post tweets in Twitter.

트위터 송신(등록)

Twitter 내용 *

전송

Save: request the registration of created tweets.

Twitter registration result inquiry

A screen is provided for registering tweets and checking the results.

트위터 송신 결과






등록ID 27019388520
계정ID donghan830
별명 장동한
URL http://www.egovframe.go.kr
트위터 내용 전자 정부 트위터 송신 테스트
Profile Image 
등록일 2009-07-06 14:30:25
favorite false
retweet false
runcated false

확인

Check: move to Twitter registration screen.

Twitter list inquiry

The your tweets and the tweets of friends you are following are inquired in the order of time (date).

프로필 이미지	내용
	Heo June(2010-10-11 13:34:44) 듀얼모니터를 쓰는데도 뭔가 같이 놓고 볼 일이 있으면 자꾸 인쇄를 해서 종이로 뽑은 다음에 참고를 하게 됩니다. 이것은 제가 아직 아날로그적인 감성이 살아있기 때문일까요 아니면 한 쪽 모니터가 트위터와 페이스북 전용이기 때문일까요. http://papercut.tistory.com
	okjsp(2010-10-11 13:32:10) it 업종(전산실) 근무하시는분들 계신가요?????: 이직한지 한달된 29세 청년입니다.간략하게 여길 소개하자면vb6.0+ms sql 이 구성으로 사용중이고80%이상 vb사용하는듯합니다. erp개발보... http://j.mp/bwQo77 http://okjsp.pe.kr
	okjsp(2010-10-11 13:17:43) 서브스트링..? C.INVC_NO[1,3] '-' C.INVC_NO[4,7] '-' C.INVC_NO[8,10] &... http://j.mp/boRj1z http://okjsp.pe.kr
	okjsp(2010-10-11 13:02:30) 美EU-IMF 연합전선으로 중국 압박...번져가는 통화전...: 미국처럼 함 해보라고 명석을 많이도 아니고 아주 사알짝 짊아주려고 하는데 중국의 반응이 상당히 결사적이네요. 발권국가도 아닌게 소비시장 제공한다... http://j.mp/aWA3b2 http://okjsp.pe.kr
	[한국 리눅스연구소 공식트윗](2010-10-11 12:30:33) #리눅스_ [질문과 답변] SULinux 2.0 GUI 평가판 yum-updated가 실패 듭니다. http://bit.ly/aDKaBA http://www.sulinux.net

Inquire: inquire as much data as inputted.

Twitter authentication key management

A screen is provided so as to manage Twitter authentication key automatically.

트위터 인증키(ConsumerKey/ConsumerSecret) 관리

Consumer key *	<input type="text"/>
Consumer secret *	<input type="text"/>
<input type="button" value="저장"/>	

Save: request saving of created or modified Twitter authentication key.

Twitter OAuth authentication key issuance process

test Consumer key : saaeVLrxfGqBaTO2SQQ
 test Consumer secret : wKMIMTnO44Bs4znEk9NP1Aag4kIPX5tisfccrokdxdg
 test account: egovframe
 test password: *

- 1) login <http://twitter.com/apps> Twitter site.
- 2) Click Register a new application button and register the service in the registration page as in the following.

EgovTwitReceiveSvc Settings



Application Icon:



찾아보기...

Maximum size of 700k: JPG, GIF, PNG.

Application Name:

EgovTwitReceiveSvc

Description:

전자정부 표준 프레임워크 트위터 서비스 수신

Application Website:

http://www.egovframe.go.kr

Where's your application's home page, where users can go to download or use it?

Organization:

Website:

http://www.egovframe.go.kr

The home page of your company or organization.

Application Type:

Client Browser

Does your application run in a Web Browser or a Desktop Client?

- Browser uses a Callback URL to return to your App after successfully authentication.
- Client prompts your user to return to your application after approving access.

Callback URL:

http://common.egovframe.go.kr/uss/ion/tir/selectTwitt

Where should we return to after successfully authentication?

Default Access type:

Read & Write Read-only

What type of access does your application need?

Note: @Anywhere applications require read & write access.

Use Twitter for login:

Yes, use Twitter for login

Does your application intend to use Twitter for authentication?

Save

Cancel

Delete

※ Callback URL: <http://common.egovframe.go.k/uss/ion/tir/selectTwitterPopupProcess.do>
(URL for return after key issuance)

3) Consumer key, Consumer secret is issued as in the following.

Application Details



EgovTwitReceiveSvc by

전자정부 표준 프레임워크 트위터 서비스 수신

created by 전자정부 표준프레임워크 오픈커뮤니티 – read and write access by default

Edit Application Settings

Reset Consumer Key/Secret

Consumer key

saaeVLrxerfGqBaTO2SQQ

Consumer secret

wKMIMTnO44Bs4znEkx9NP1Aag4klPX5tisfccrokdxcg

Request token URL

http://twitter.com/oauth/request_token

Access token URL

http://twitter.com/oauth/access_token

Authorize URL

<http://twitter.com/oauth/authorize>

We support hmac-sha1 signatures. We do not support the plaintext signature method.