

IDE

Summary

The IDE provides several features of an Perspective, Menu and the project creation wizard based on the Eclipse to help developers building the eGovFrame based-applications.

Description

The eGov IDE expands the Eclipse IDE by adding the following features to build the eGovFrame-based applications: a default View setting, layout, menu, and the Project Creation Wizard. Here's the description of each feature.

Perspective

This skill provides the optimal default view setting and layout to develop the applications.

Menu
An integrated menu allows a quick approach to distributed plug-ins (essential to eGovFrame) of Eclipse. This item can be enabled only in eGovFrame Perspective.

Project Creation Wizard

The project creation wizard holds the file structure of source code and related files, and manages builder settings to develop the eGovFrame-based applications.

- Core Project: For developing business services. Use this to develop models, Vo, DAO, service and so forth.
- Web Project: For developing Web Application UI. Use this to develop web application settings, controller, JSP, CSS, JavaScript and so forth.


Template Project Creation Wizard

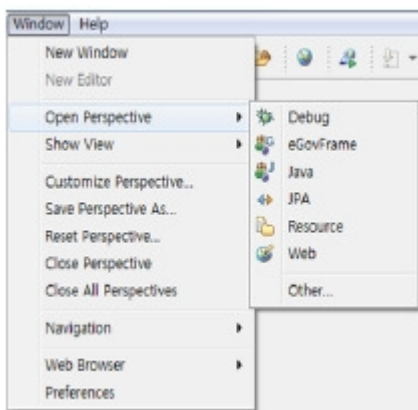
The template project creation wizard helps to create an application project with common components for eGovFrame-based applications.

- Simple Homepage: Lightweight runtime environment for building basic webpage. It contains the following features:
 - Main page, user management, notice management, board management and guide management.
- Portal Site: Lightweight runtime environment for building portal site. It contains the following features:
 - Templates for portal notice management, user management, rights management, portal intro page management, portal notice management, portal FAQ management, portal event participants management and so forth.
- Enterprise Business: Lightweight runtime environment for building internal business features. It contains the following features:
 - Main page, task user management, notice management, board management, rights management, program management, menu management and so forth.

Manual

1. eGovFrame Perspective

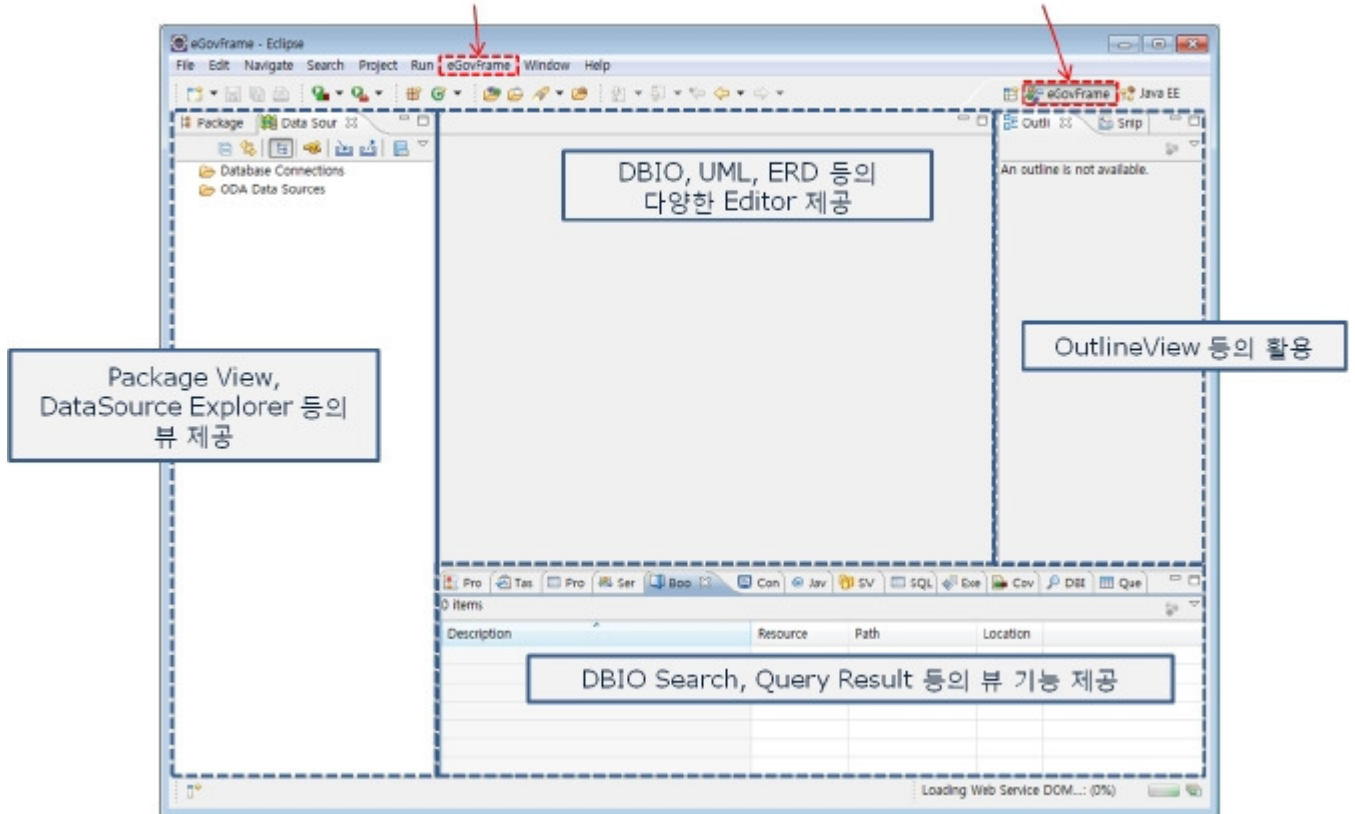
1. Open the Perspective button  on shortcut display area upper right side of Workbench acts the same as Window>Open > Perspective Menu.
2. Select Other... in drop down menu to see all Perspective list
3. Select eGovFrame Perspective.



4. The title label displays "eGovFrame".

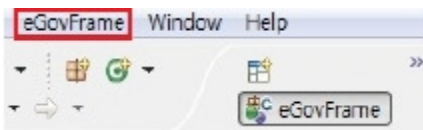
eGovFrame 통합메뉴

eGovFrame Perspective 선택



2. eGovFrame Menu

The eGovFrame menu will appear when you set Perspective to eGovFrame.



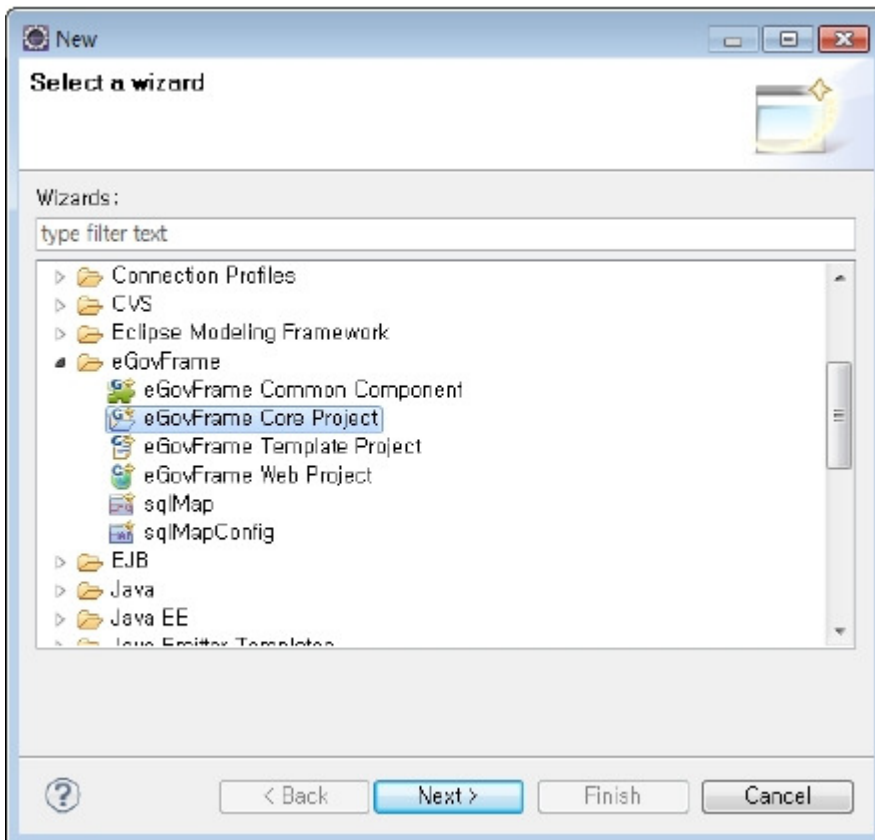
Class	Menu	Sub-menu	Description
Start	New Core Project		Run New eGovFrame Core Project creation wizard
	New Web Project		Run New eGovFrame Web Project creation wizard
	New Template Project		Run New eGovFrame Template Project creation wizard
Analysis	New Usecase Diagram		Run New Usecase Diagram creation wizard
Design	New ER Diagram		Run New ER Diagram creation wizard
	New Class Diagram		Run New Class Diagram creation wizard
Implementation	New SQL Map Config		Run New SQLMap Config creation wizard
	New SQL Map		Run New SQLMap creation wizard
	Show DBIO Search View		Show BIO Search View
Configuration	Customize Development Tool		Run custom development environment installation wizard
	Server Connection Management	Show SVN Repositories View	Run SVN Repositories View
		Nexus	Run Nexus configuration related Preference page

3. eGovFrame Project Creation Wizard

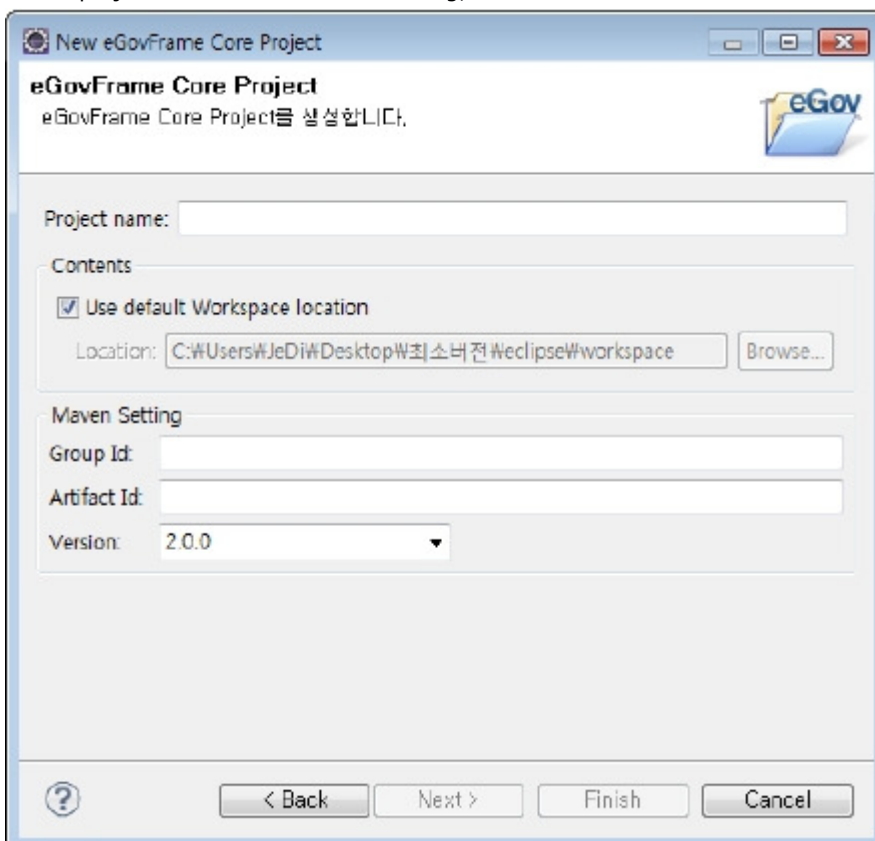
3.1. Core Project Creation Wizard

1. Select File > New > eGovFrame Core Project in the menu bar. (Make sure it is in eGovFrame Perspective.)

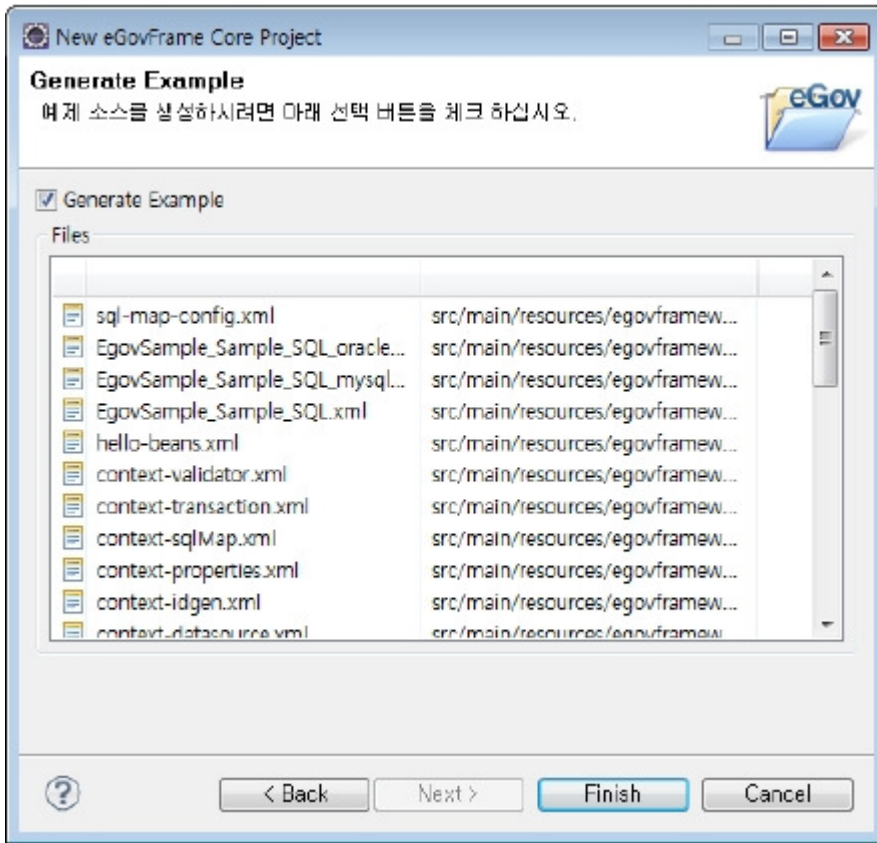
Otherwise, use Ctrl+N key combo to launch the New Wizard Selecting Dialog, select eGovFrame > eGovFrame Core Project, then click the Next button.



2. Enter a project name and fill Maven setting, then click Next.



3. Check Generate Example if you want an example source code, then click the Finish button.



Page of "Create a eGovFrame Core Project"

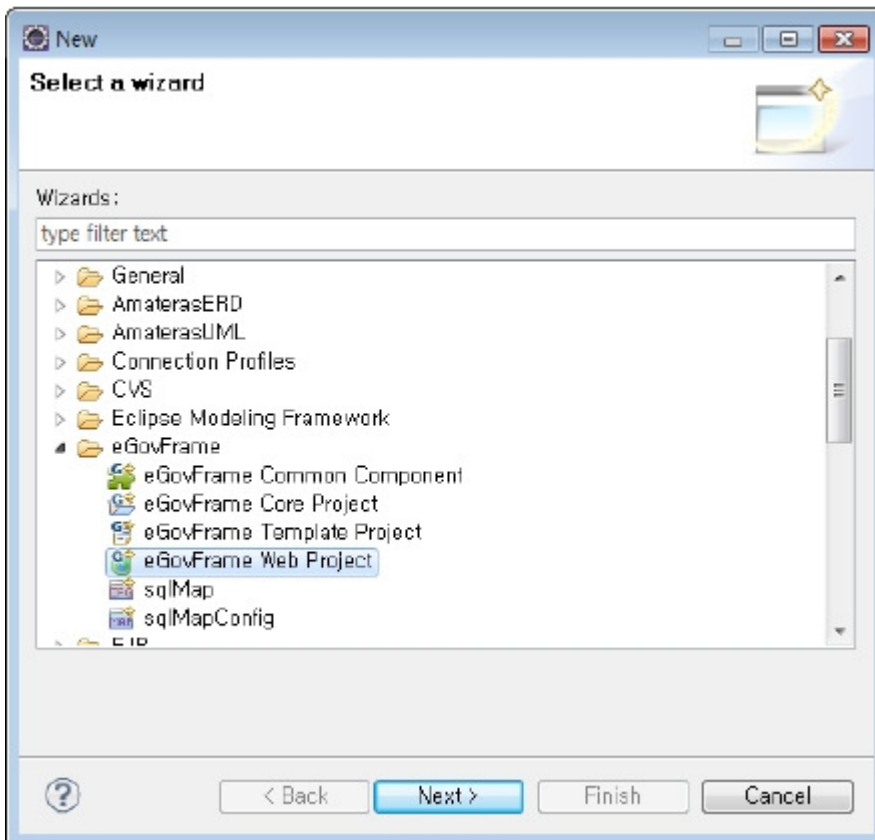
Options	Description	Default
Project Name	Enter a new group name.	Empty
Contents	If "Use default Workspace location" is checked, a project directory will be created in default workspace location with the project name. To select an arbitrary folder, uncheck this option and click "Browse" to select another folder.	Use Default Workspace location
Group Id	Enter a group Id in Maven.	Empty
Artifact Id	Enter a artifact Id in Maven.	Empty
Version	Enter the version in Maven.	2.0.0

Page of "Generate Example"

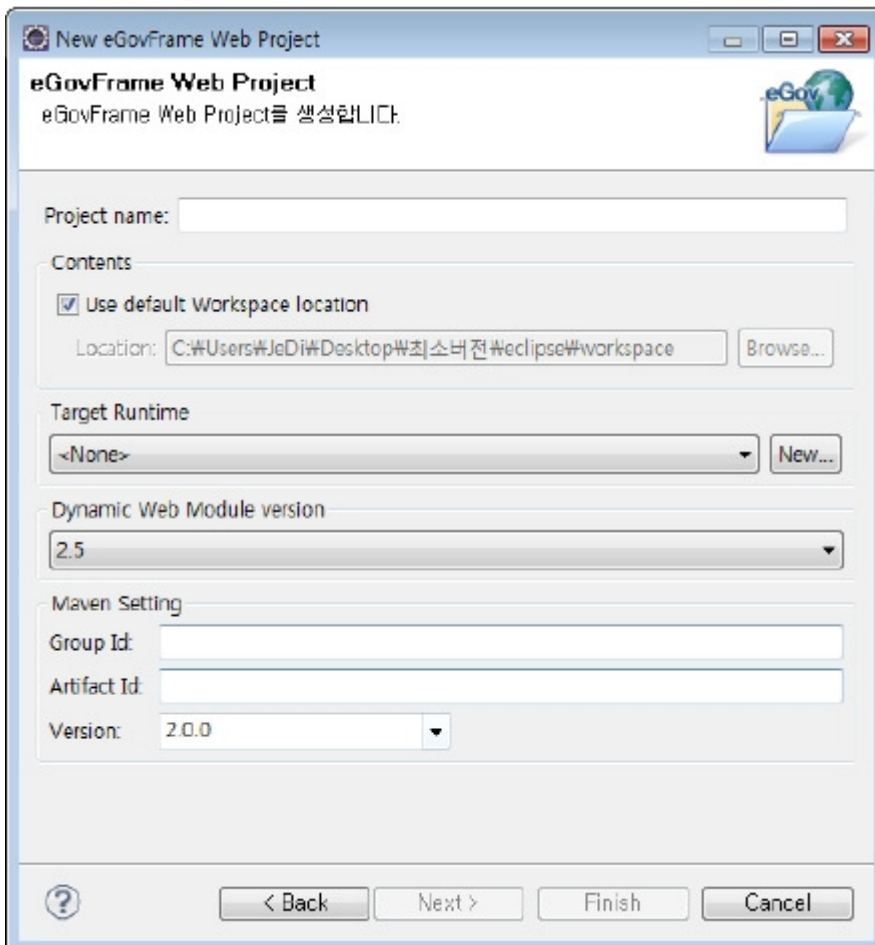
Options	Description	Default
Generate Example	Select it if you want to include a sample source to the	false

3.2. Web Project Creation Wizard

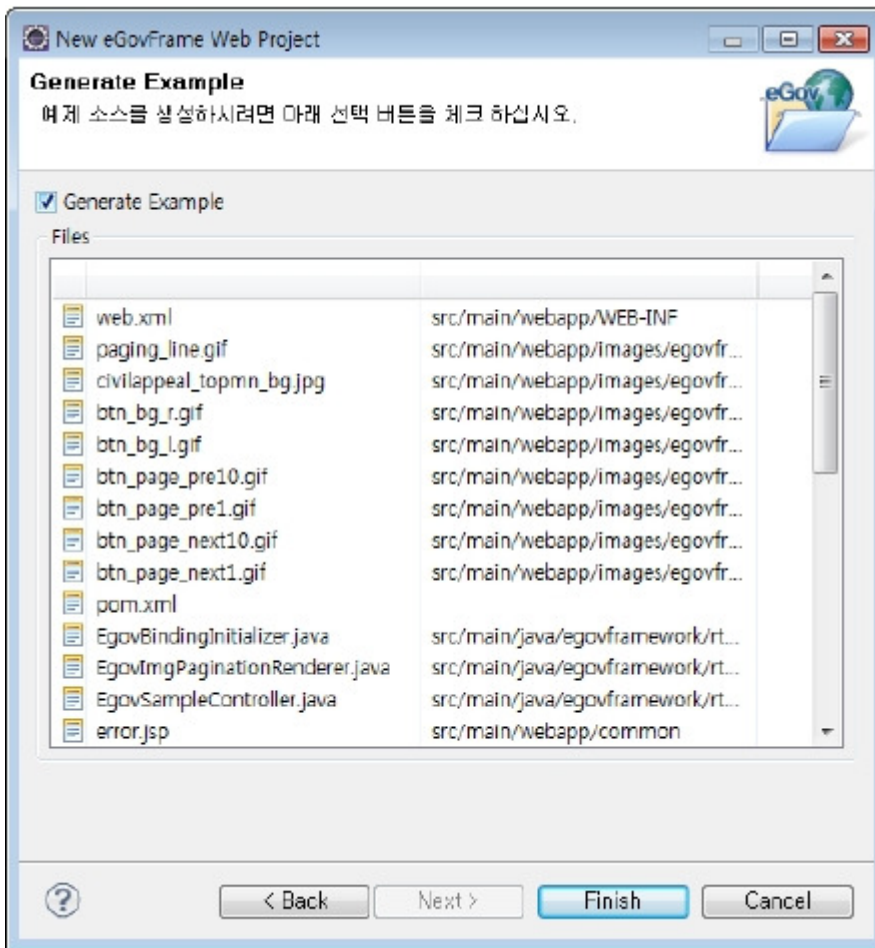
1. Select File > New > eGovFrame Web Project in the menu bar. (Make sure it is in eGovFrame Perspective.)
Otherwise, use Ctrl+N key combo to launch the New Wizard selecting dialog, select eGovFrame > eGovFrame Web Project, then click the Next button.



2. Enter a project name and fill Maven setting, then click the Next button



3. Check Generate Example if you want an example source code, then click the Finish button.



Create an eGovFrame Web Project Page

options	description	Default
Project Name	Enter new project name.	Empty
Use default Workspace location	If checked, project directory is created in default workspace using the project name. To select an arbitrary folder, uncheck this option and click Browse and select another	C checked
Target Runtime	Select target server to run the web application.	<None>
Dynamic Web Module Version	Select Dynamic Web Module Version.	2.5
Group Id	Enter a group Id in Maven.	Empty
Artifact Id	Enter a artifact Id in Maven.	Empty
Version	Enter the version in Maven.	2.0.0

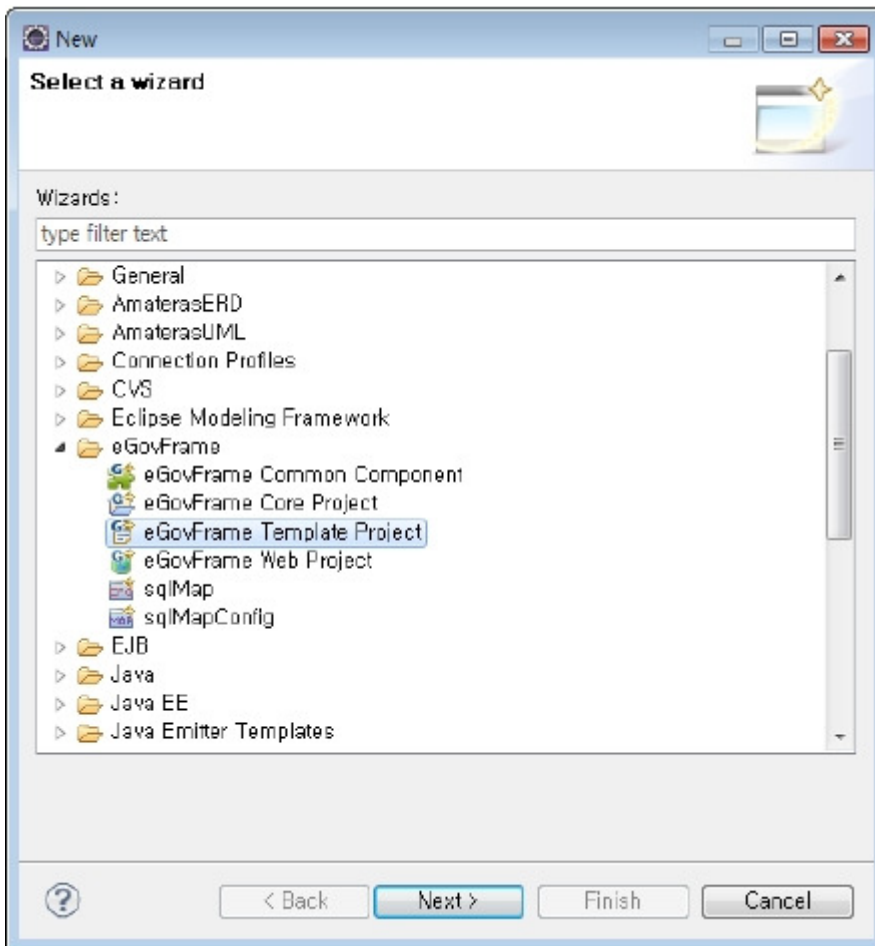
Generate Example Page

Options	Description	Default
Generate Example	Check this if you want to include a sample source to	false

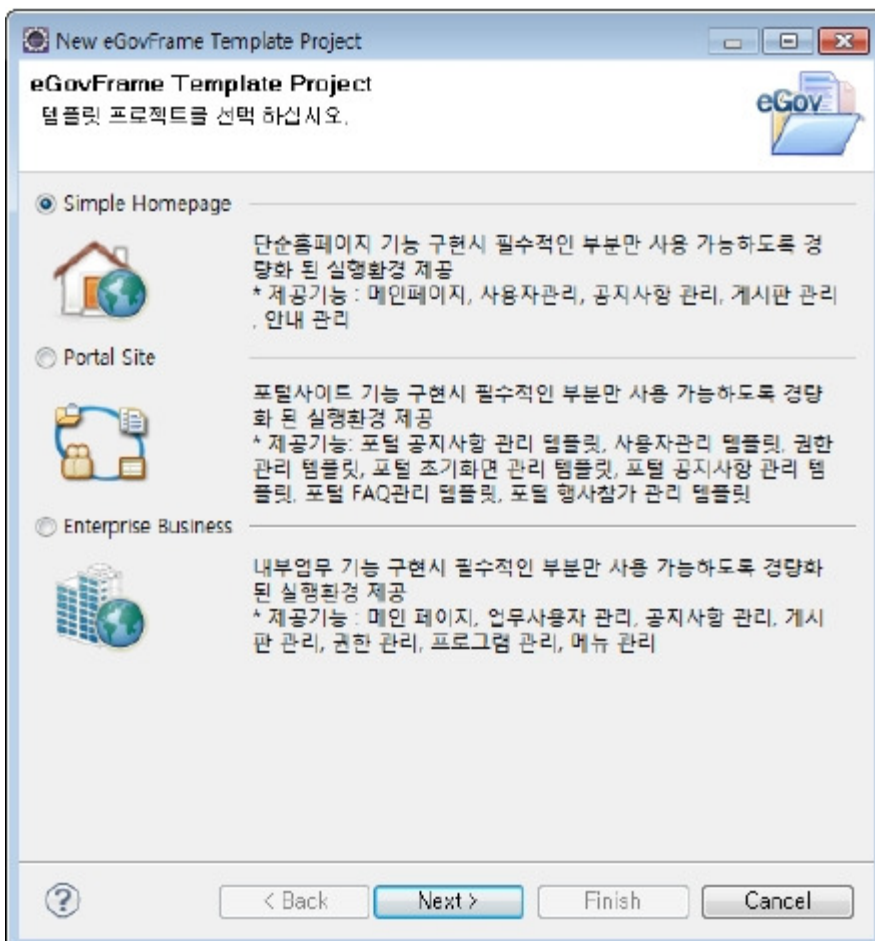
※ After creating a project, change the repository information in pom.xml to match the project repository information.

3.3. Template Project Creation Wizard

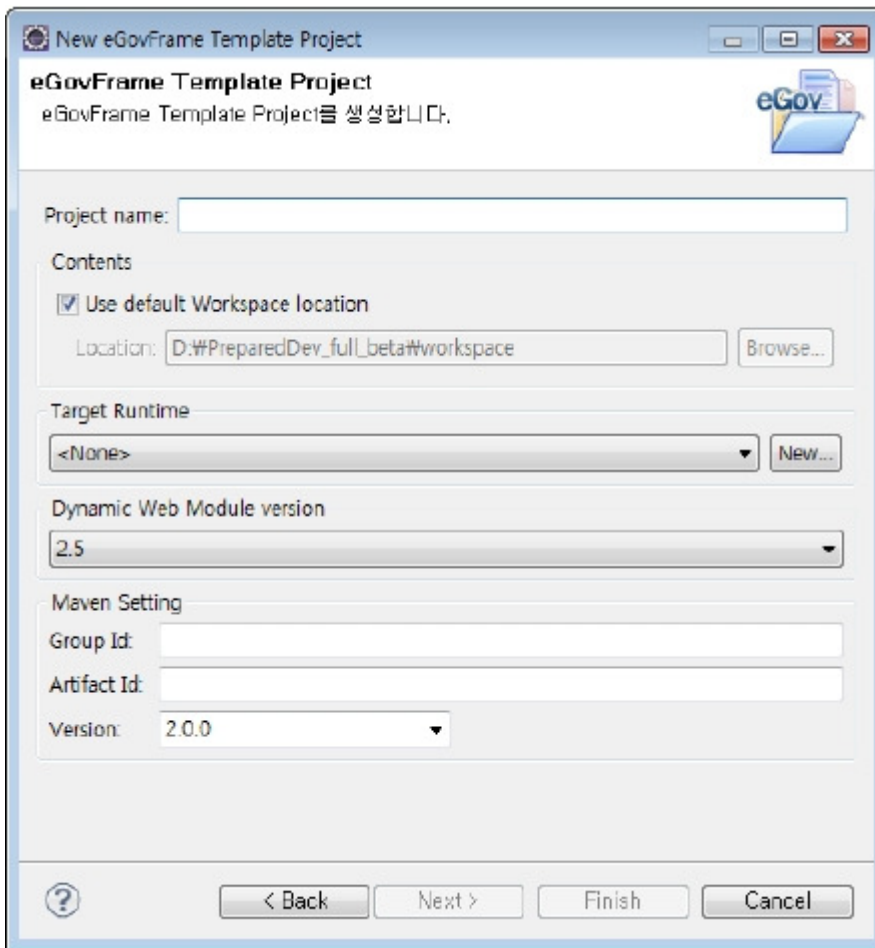
1. Select File > New > eGovFrame Template Project in the menu bar. (Make sure if it is in eGovFrame Perspective.)
Otherwise, use Ctrl+N key combo to launch a New Wizard selecting dialog, select eGovFrame > eGovFrame Template Project, then click the Next button.



2. Select a template type to create, then click the Next button.



3. Enter the project name and fill Maven setting, then click the Finish button.



Create a eGovFrame Template Project Page

Options	Description	Default
Project Name	Enter a new project name	Empty
Use default Workspace location	If checked, the project directory is created in default workspace using the project name. To select an arbitrary folder, uncheck this option and click Browse to select another folder	Checked
Target Runtime	Select a target server to run the web application.	<None>
Dynamic Web Module Version	Select Dynamic Web Module Version.	2.5
Group Id	Enter a group Id in Maven.	Empty
Artifact Id	Enter an artifact Id in Maven.	Empty
Version	Enter the version in Maven.	2.0.0

✓ Note: To run the template project properly, database setup is required. eGov provides a script for database setup.

- Here's how to setup database scheme and data configuration after the template installation.

1. Install template project.
2. Run the script contained in DATABASE folder under the template project. The script provides DML and DDL. Four types of databases (Oracle, MySql, Altibase, Tiber) are supported.

