

Nexus

Summary

This document provides a guide to Nexus Management Configuration by eGovFrame.

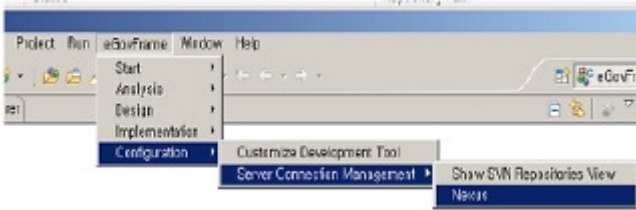
Description

The Next Management configuration provides convenient way to manage settings by integrating setting information such as Nexus repository info that had to be managed manually.

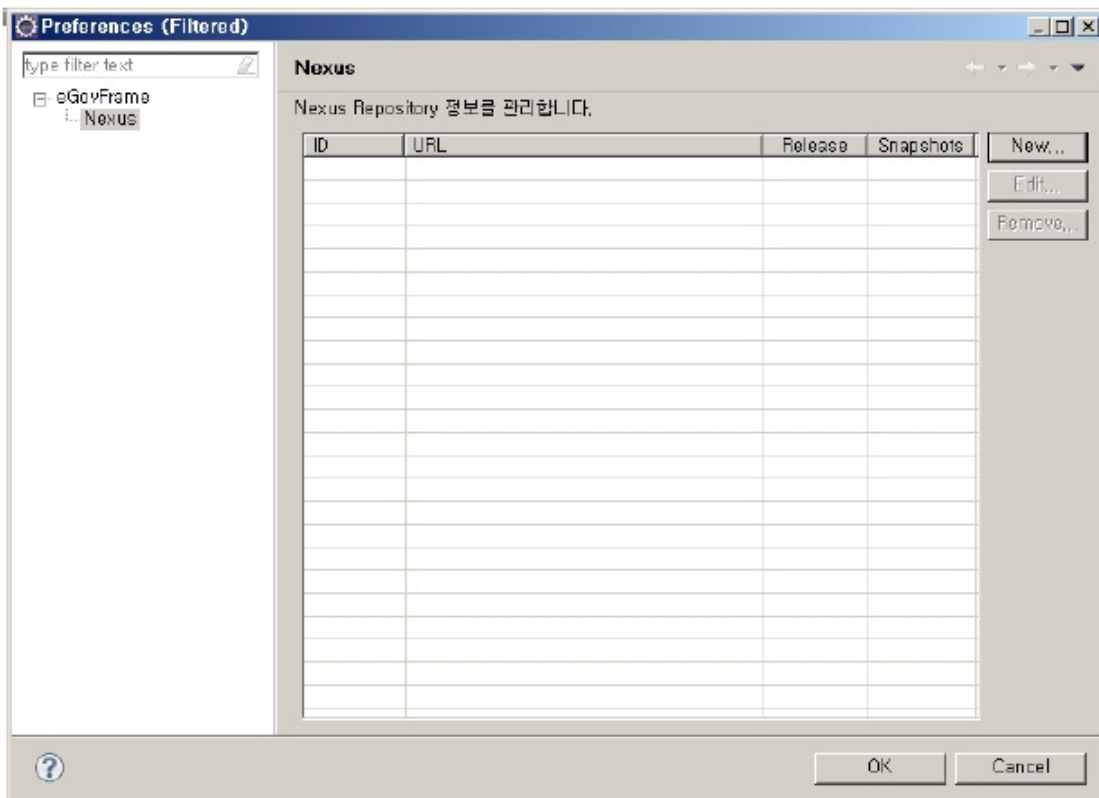
Manual

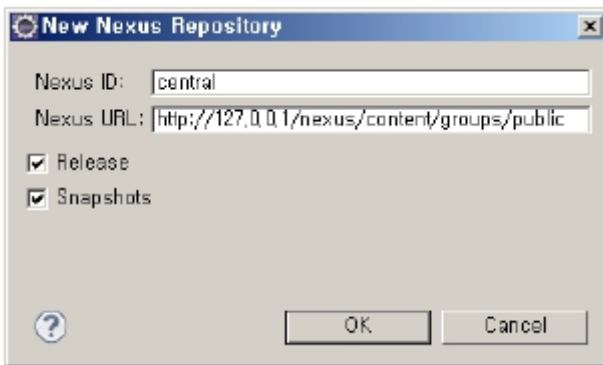
Nexus Configuration

1. Select eGovFrame > Configuration > Server Connection Management > Nexus in the eGovFrame menu.



2. Click the New button in a Property page to add a new Nexus repository.



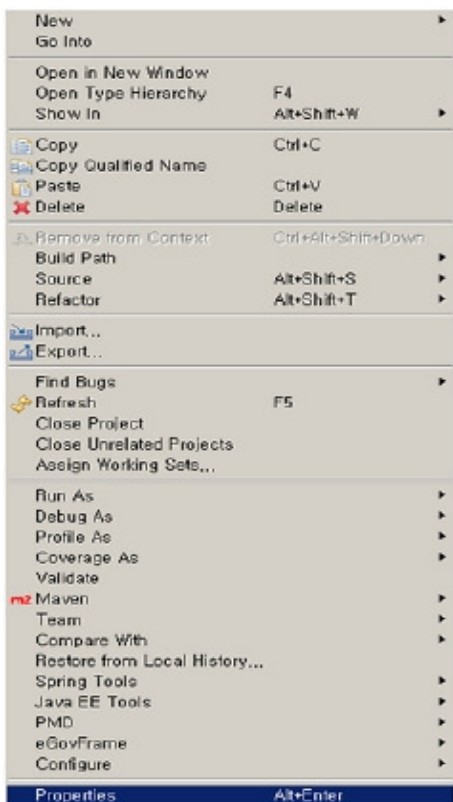


I. Release: If checked, the latest version is used for libraries.

II. Snapshots: If checked, it would trace the latest library version at every build processes. If existing library is out-of-date, a new version is downloaded.

Manage Nexus Repository for each Project

1. Select a target project in the eGovFrame Perspective, right-click on it, and select Properties in the contextual menu.



2. Select eGovFrame > Nexus from a Properties page.

3. Check repositories to use within existing Nexus Repositories and click the OK button to apply.

